

Introduction to TCS: Supports for Supported Employment

Samantha Goldfarb
Director of Training and Consultation Services
The Arc of New Jersey



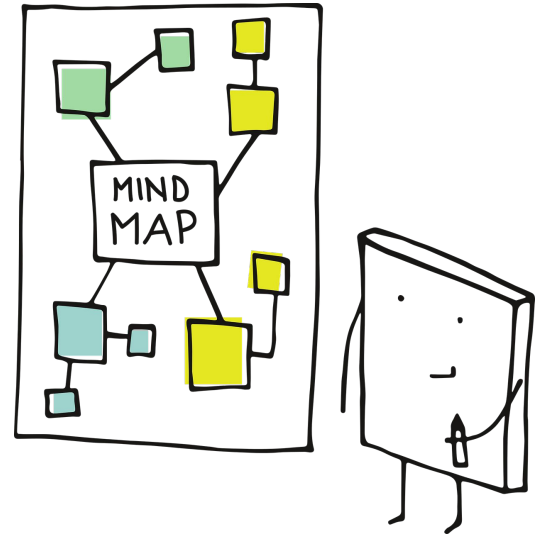
But first...

Supported Employment?

What is Supported Employment (SE)?

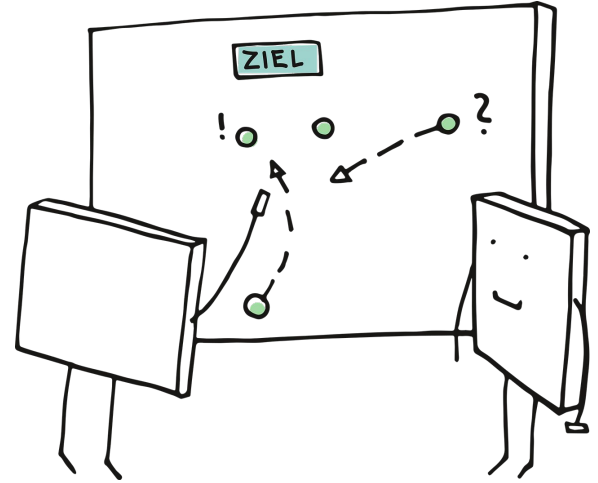
★ A service that makes work accessible to people with disabilities

- Provides assistance with...
 - Finding a career that suits you best
 - Applications and interviews
 - Learning how to do job tasks
 - Developing job-related skills
 - Creating accommodations
 - Fostering job-related independence



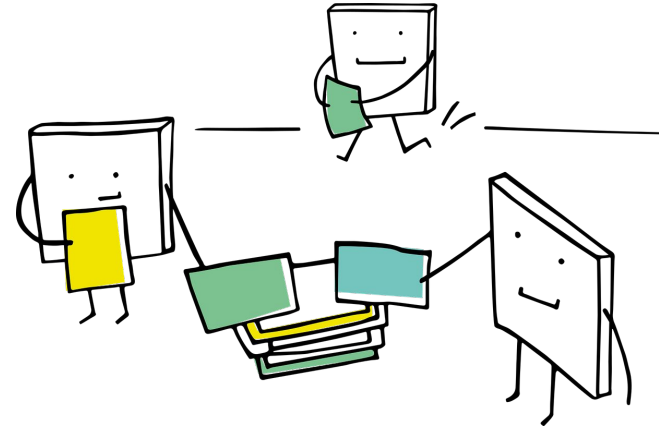
What is Supported Employment (SE)?

- **How does it work?**
 - Work closely with one or more job coaches and do tasks with their help
- **What should I expect?**
 - Going after your goals (even if you don't get your dream job right away)
 - Respect, compassion, and full attention from your job coaches
 - Responsibility for your work



What is Supported Employment (SE)?

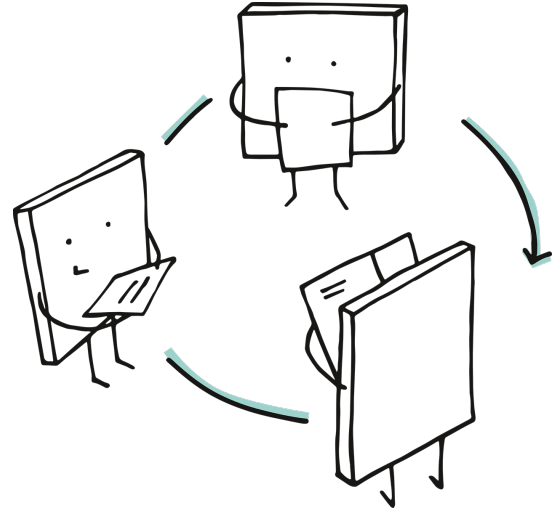
- **What kind of work would I do?**
 - Work that people without disabilities are offered (*competitive*)
 - Work that takes place in the community (*integrated*)
 - Work that pays minimum wage or higher
 - Work that is safe and healthy for you
 - Work that is fulfilling to you and works towards your goals



What is Supported Employment (SE)?

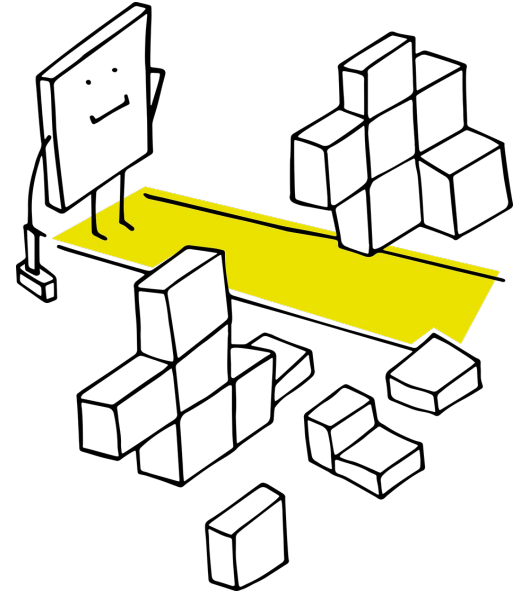
- *How do I get it?*

- Source depends on your disability:
 - **DDD** - Division of Developmental Disabilities
 - **DVRS** - Division of Vocational Rehabilitation Services
 - **CBVI** - Commission for the Blind and Visually Impaired
- Research and choose a **provider** (agency that hires the job coaches)



What is Supported Employment (SE)?

- ***What are my DDD options for SE?***
 - Individual Employment Support
 - One-on-one support with a job coach
 - Small Group Employment Support
 - Work crews made of people with disabilities with a job coach
 - Customized Employment
 - Jobs tailored and/or created specifically for you
 - ***Others possible depending on the source!***



Now let's talk TCS!

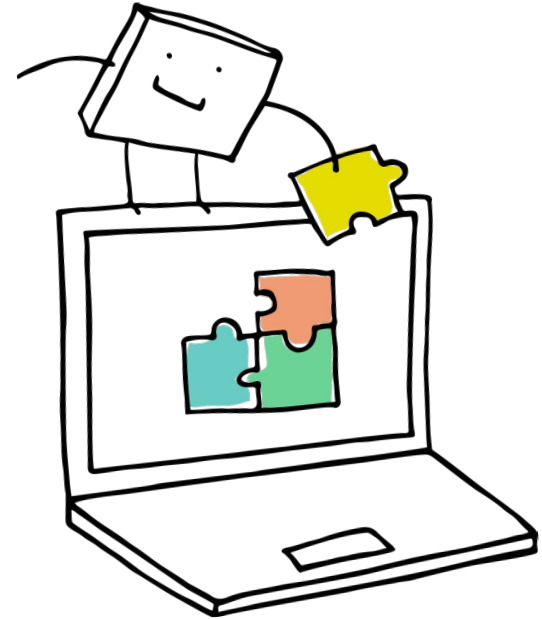
What is TCS?

- Training and Consultation Services
 - **Service Support**
 - Training
 - Consultation
 - *SE Providers*
 - *Service users and advocates*
 - *Employers*
 - **Service Development**
 - DDD compliance
 - State and national SE communities



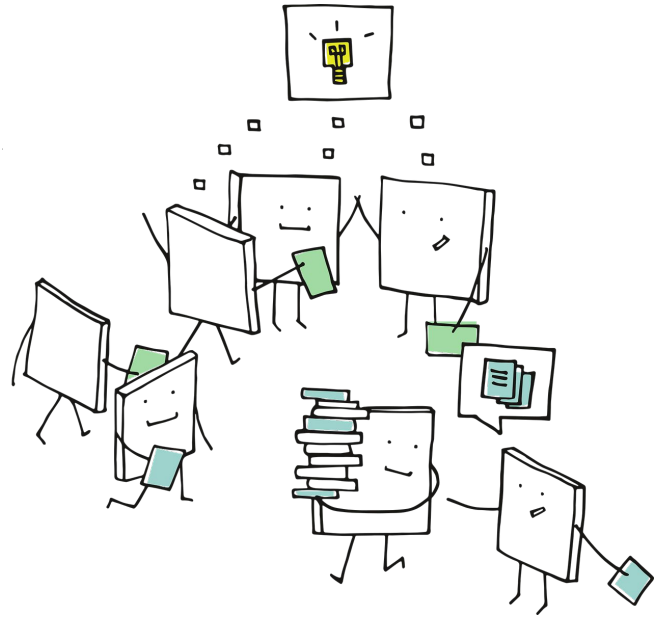
What's the goal?

- To improve supported employment's...
 - **Outcomes**
 - Increased hires, job retention, job satisfaction etc.
 - **Experiences**
 - Better quality of care, coach-client relationships etc.
 - **Sustainability**
 - Improved funder compliance, relationship with employers etc.



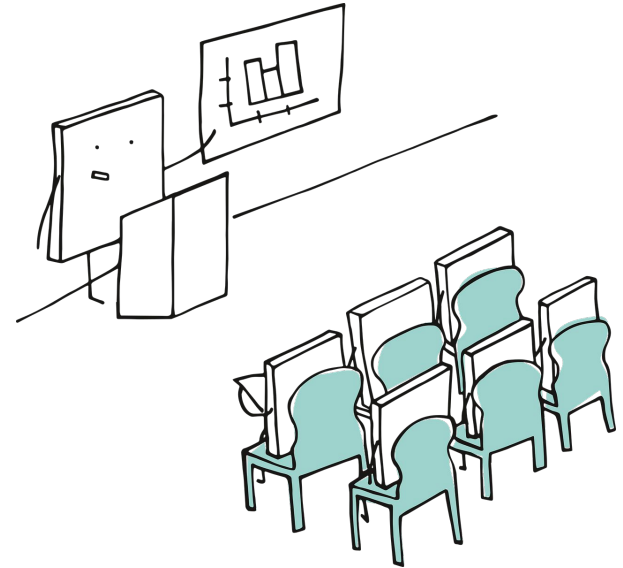
How do we achieve this?

- **Better methods**
 - The most successful and respectful ways to provide SE
- **More resources**
 - Tools and provisions to make it easier to provide the best methods
- **Better understanding**
 - Providers: the needs, abilities, and potential service users have
 - Service users: what good SE looks like



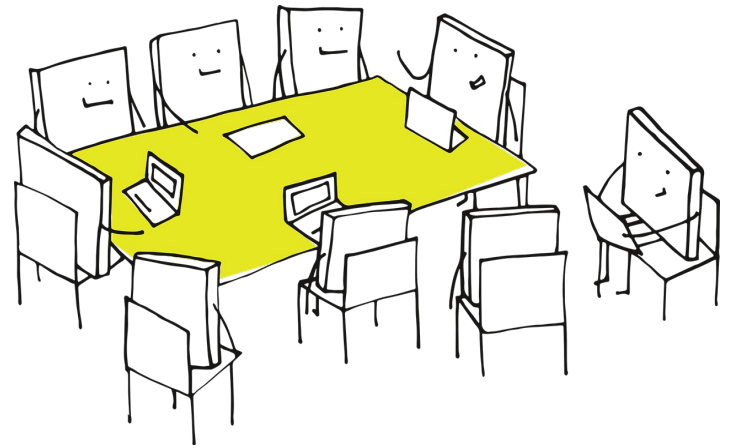
How is TCS contributing?

- **Provider support**
 - Best-practice information for managers and field staff
 - Self-advocate input
 - Scientific research
 - Dialogue with professionals
 - Tools, resources, and activities to make best practices easier to implement
 - One-to-one support for struggling staff or specific challenges



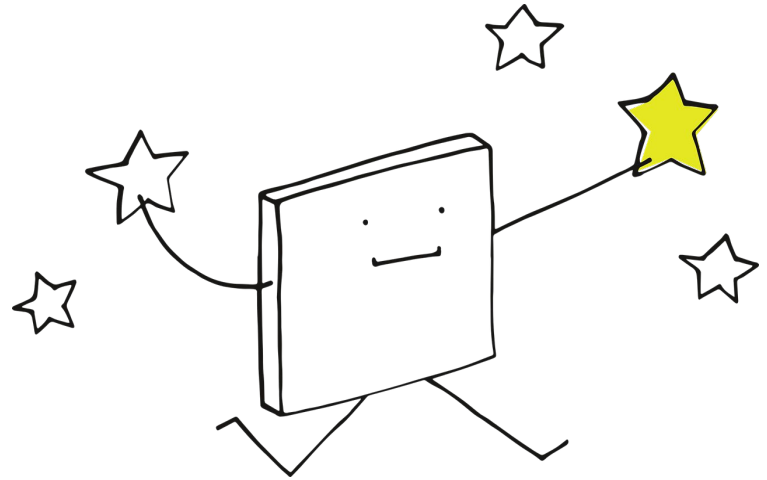
How can we support you?

- **Training**
 - What to expect from job coaches
 - How to navigate the DDD SE system
 - Navigating community connections for employment success
 - What else would be helpful?
- **Consultation**
 - Challenges specific to your situation
- **Tools and Resources**
 - Makes SE navigation easier



Overall...

- **TCS is here to help you!**
 - Please reach out – the more we know, the more we can help!
 - TCS services
 - Specific concerns
 - Ideas and insight
 - Needs in the community
 - Emerging trends



Any questions?

Thank you!

Samantha Goldfarb
*Director of Training
and Consultation
Services (TCS)*

(732) 748-8434

sgoldfarb@arcnj.org

